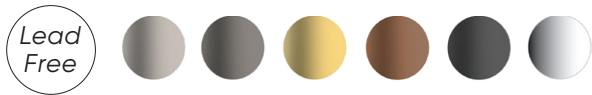
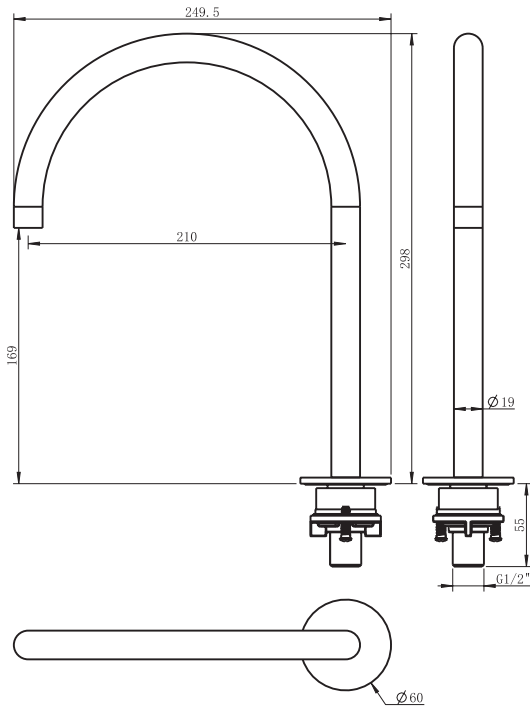


Anson Hob Swivel Sink Spout



Anson Sink Spout pairs with Anson Hob Mixer



Hob Swivel Sink Spout – Reach 210mm

Product features

The Hob Swivel Sink Spout is designed to pair with the Hob Mixer.

- Durable, high quality finishes
- Lead free stainless steel

Available in six finishes

- Brushed Stainless Steel
- Gunmetal, PVD
- Brushed Gold, PVD
- Brushed Bronze, PVD
- Black Matte, EPD
- Chrome

Product details

MATERIAL Solid stainless steel 304 construction, lead free.

Ratings and installation

WELS RATING WELS 6 star, 4.5 litres/minute. Reg No TBA.
WELS Licence 0296. WM Licence 27027.

PRESSURE 150 – 500kPa.

TEMPERATURE Maximum water temperature 75°C.

INSTALLATION Must be installed by a licensed plumber. Taphole: 35mm.

Order codes

- 193915 Anson Hob Swivel Sink Spout, 210mm, Brushed SS
- 193919 Anson Hob Swivel Sink Spout, 210mm, Gunmetal
- 193918 Anson Hob Swivel Sink Spout, 210mm, Brushed Gold
- 193920 Anson Hob Swivel Sink Spout, 210mm, Brushed Bronze
- 193917 Anson Hob Swivel Sink Spout, 210mm, Black Matte
- 193916 Anson Hob Swivel Sink Spout, 210mm, Chrome

Anson Hob Mixer is available separately.



SEIMA

kitchen + laundry + bathroom ware

seima.com.au

Please note

- All measurements are in millimetres.
- Use the actual product to verify installation details.
- Specifications may vary without notice as part of our continuous improvement practices.
- Clean with a damp cloth. Do not use abrasive cleaners, liquids or pastes.