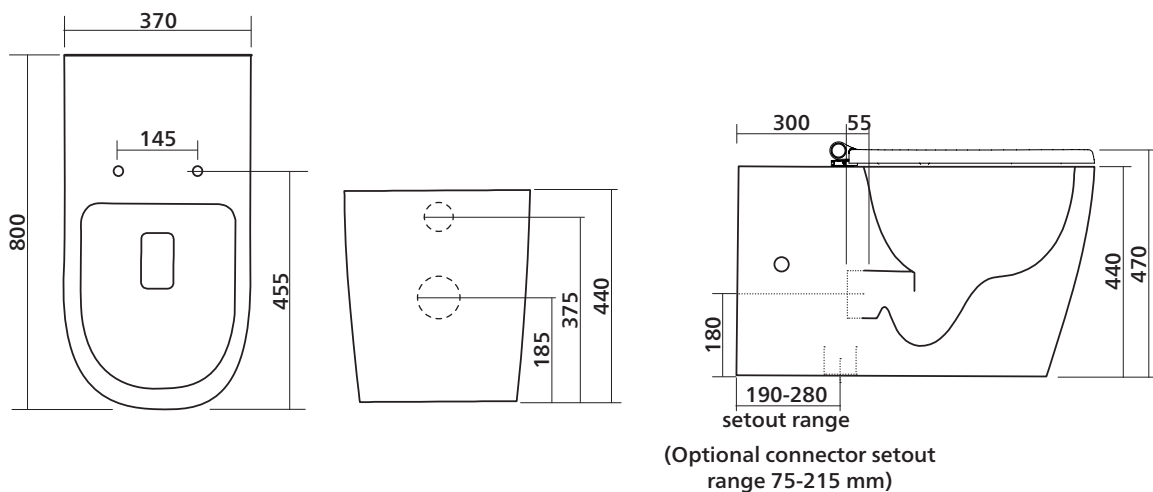


# Modia Care Floor Mount Toilet Suite

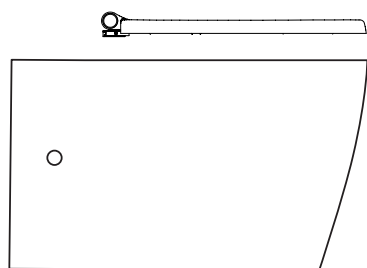


## Important !

- 1 Inspect the components before installation to ensure there are no visible defects. If a defect is found, do not install the toilet suite and contact the supplier immediately. Claims for defects will not be accepted after the product has been installed.
- 2 Universal trap: Suitable for S-trap or P-trap installation (P-trap connector not supplied).
- 3 Must be installed by a licensed plumber in accordance with Australian Standard AS3500 and meet the requirements of local licensing authorities. Failure to do so may void the warranty.



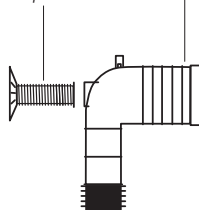
## Package contents



1 x ceramic pan

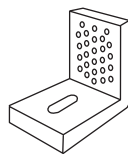
Note: Toilet seat is in separate package.

Threaded section can be trimmed to required size.

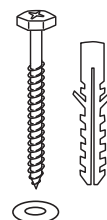


Large end of pan connector can be trimmed to suit setout.

1 x pan connector  
For connecting pan to floor outlet pipe/S-trap.  
1 x threaded section (with flange plate)  
Flange attaches to wall; threaded section links to pan connector.



2 x concealed fixing brackets  
Optional – can be used to connect pan to floor.



2 x floor bolts (and white plugs)  
2 x washers  
Optional fixing #2 – used with fixing brackets to secure pan to floor. Bolt is inserted through bracket base hole.



2 x caps  
2 x screws  
2 x pan plugs  
Optional fixing #2 – used to secure pan to concealed fixing bracket. Plastic plug is placed into hole in side of pan exterior, screw is rebated into plug and then screws into a hole in upright section of bracket. Cap is used to cover plastic plug.

# SEIMA

kitchen + laundry + bathroom ware

seima.com.au

### Please note

- Installation shall be in accordance with AS/NZS3500.
- All measurements are in millimetres. Height dimensions are to base of pan. Make allowance for bedding.
- Bedding: Pan may be bedded with cement base or using silicone sealant. Fix pan to floor using a sand cement mixture of 3:1 to a depth of 60mm. Do not use lime or fast-drying cement.
- Bracket fixing: The pan should be bedded with silicone sealant and fixed with the brackets supplied.

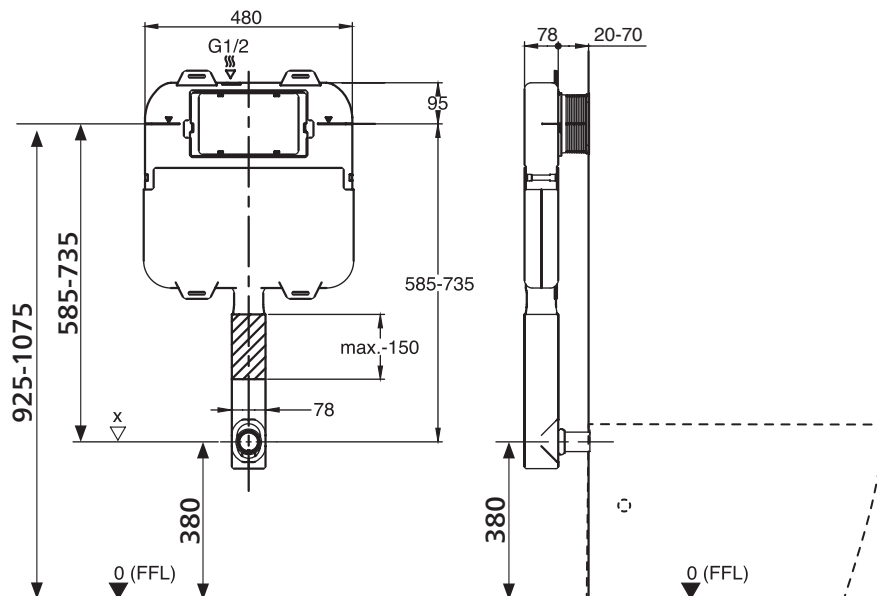
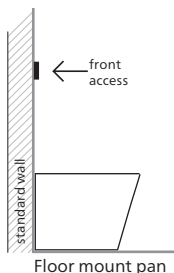
- Do NOT use epoxy type adhesives.
- Dimensions are nominal and subject to normal ceramic manufacturing variations.
- Specifications may vary without notice as part of our continuous improvement practices.
- Clean with a damp cloth. Do not use abrasive cleaners, liquids or pastes.

# Modia Care Floor Mount Toilet Suite / 2

## Modia Care Floor Mount pan and 100 cistern – Standard wall

### Floor Mount installation with 100 slim cistern – 80mm thick

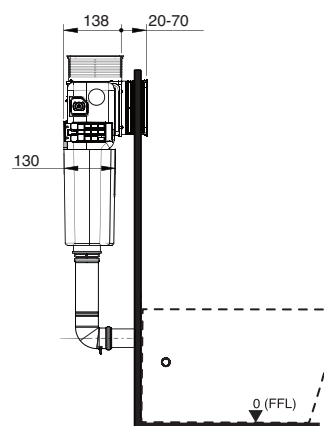
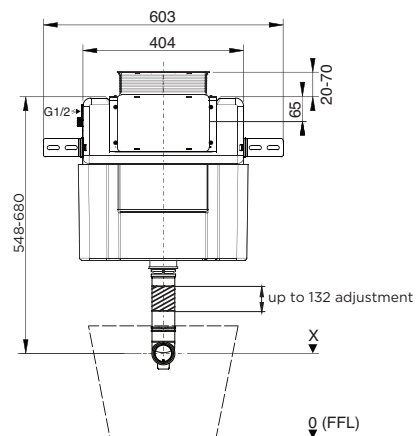
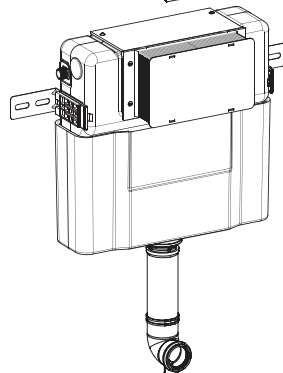
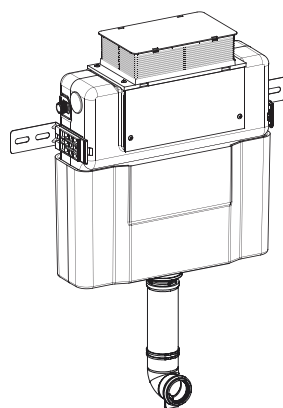
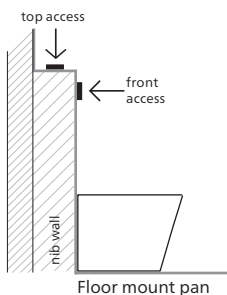
The 100 cistern can be installed within a standard wall, allowing for a cistern thickness of 80 mm. The flush button plate is placed on the wall above the toilet pan (front access). The cistern can be serviced through the flush plate. The 100 cistern can also be used in a nib wall.



## Modia Care Floor Mount pan and 101 cistern – Nib wall

### Floor Mount installation with 101 cistern – 130mm thick

The 101 cistern can be installed within a nib wall, allowing for a cistern thickness of 130 mm. The flush button plate is placed either on the wall above the toilet pan (for front access) OR on the top of the nib wall (for top access).



## 1 S-trap procedure – Securing the pan connector in place

Determine the centre of the **pan** and mark the centre line on the floor and wall.

Work out the setout required for your specific site installation.

**Setout range: 90–280 mm.**

You may need to trim the large end of the plastic **pan connector** to fit the required setout. To trim, first remove the plastic ring and rubber seal, then cut pipe to size. Refit rubber seal and plastic ring securely, ensuring a good fit.

Position the pan connector into the floor outlet pipe (S-trap).

**Height measurement from the floor to the centre of the pan connector: 180 mm.**

Slot the **threaded section (with flange plate)** onto the pan connector, ensuring that the flange plate is touching the wall. You may need to trim the threaded section so that it fits properly.

Mark and drill the flange plate holes and secure the plate to the wall with fixing screws. The pan connector is now installed.

## 2 Positioning the pan

Use the centre line marked on the wall and floor to position the **pan**. Push the pan into the installed plastic pan connector. It is recommended that wedges are used to support the foot of the pan during positioning.

## 3 Securing the pan on the floor

### Cement fixing (Optional fixing #1)

If using cement bedding, level the pan while the cement mixture is workable. Fix pan to floor using a sand cement mixture of 3:1 to a depth of 60mm. Do not use lime or fast-drying cement.

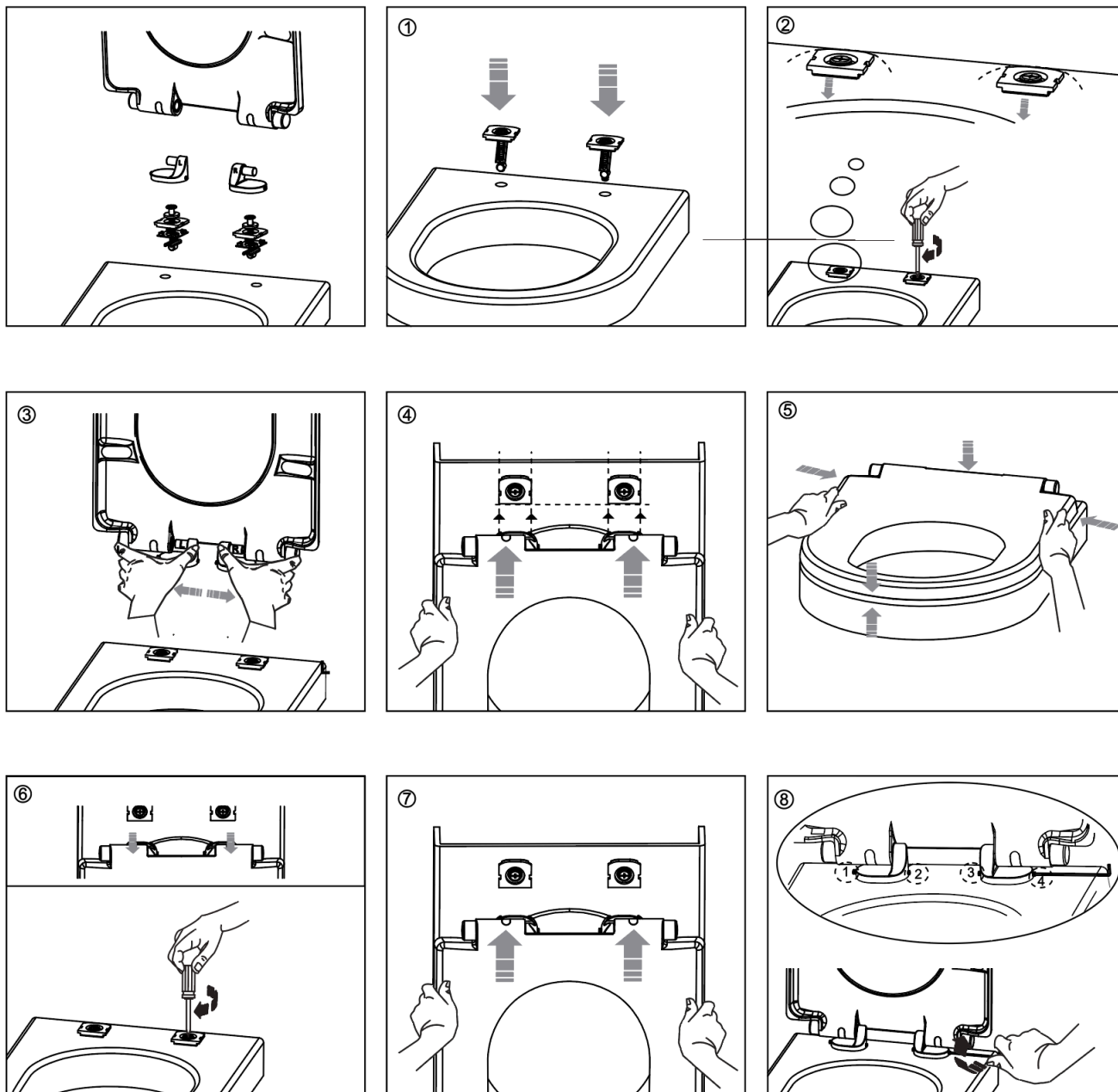
Important: Allow at least 24 hours for the cement mixture to set before using the toilet.

### Bracket fixing (Optional fixing #2)

Bed the pan with acetic cured silicone sealant, ensuring that the pan is level. Then position the concealed fixing brackets in line with the bracket fixing holes. Screw the floor bolts in place through the base of the brackets. Then secure the pan to the brackets using the plastic **pan plugs** and rebated **screws**. The **caps** can be used to cover the plugs on each side of the pan.

Important: Do not over-tighten the bolts or screws as this may cause the ceramic to crack and break.

## 4 Toilet Seat installation



## CARE INSTRUCTION

- Do not use abrasive cleaning products or products containing chlorine or acids, as these may cause yellowing or peeling of the material.
- The use of neutral soap or mild, natural household cleaning products are best for effective, problem-free cleaning.
- After cleaning, wipe the seat with a well wrung-out cloth.
- Leave the seat and lid up whenever strong cleaning products are left in the bowl of the WC pan to prevent damage from vapours.