

Chios 550 Care



MADE IN EUROPE

Collection: Essential

AS1428.1
Ambulant

AS1428.1
Accessible



Wall basin, D-shaped Optional shroud

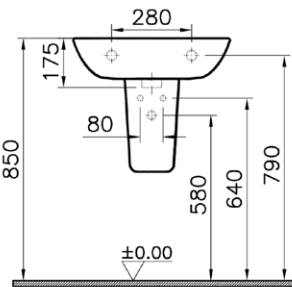
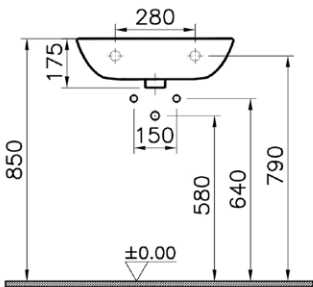
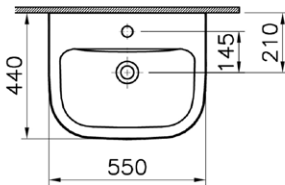
This modern, practical basin maximises bowl capacity in a compact space. The optional shroud covers wall exit pipes. Or use a bottle trap for a different look with exposed plumbing.

Order codes

- 192703 Chios 550 basin, 1 taphole
- 192704 Ceramic shroud to suit Chios 550 basin (optional extra)

Product details

- TAPHOLE 1 taphole.
- WASTE Suits 32 mm waste (not supplied).
- OVERFLOW Has overflow.
- MATERIAL Vitreous china.
- COLOUR White, gloss finish.
- FIXING Always use the actual basin to verify cutout.
Use silicone sealant. Do not use epoxy type adhesives.



Premium Basin Wastes (AVAILABLE SEPARATELY)

POP-OUT BASIN WASTE – CERAMIC CAP + CHROME BASE


- 192257 Ceramic Pop-out Basin Waste, White Silk Matte
- 192258 Ceramic Pop-out Basin Waste, White Gloss
- 192259 Ceramic Pop-out Basin Waste, Black Silk Matte
(Note: Ceramic cap also available in other colours.)

POP-OUT BASIN WASTE – COLOUR METAL CAP + COLOUR BASE

- 192010 Pop-out Basin Waste – Chrome
- 192012 Pop-out Basin Waste – Brushed Nickel
- 192199 Pop-out Basin Waste – Gunmetal
- 192013 Pop-out Basin Waste – Brushed Gold
- 192009 Pop-out Basin Waste – White Matte
- 192011 Pop-out Basin Waste – Black Matte



basin wastes

 Basin has integrated overflow.

SEIMA

kitchen + laundry + bathroom ware

seima.com.au

Please note

- All measurements are in millimetres.
- Dimensions are nominal and subject to normal ceramic manufacturing variations of ± 5 mm.
- Wastes, taps and bottle traps shown in images are not included unless specified.
- Fixing: Use silicone sealant. Do not use epoxy type adhesives.
- Always use the actual basin to verify cutout.
- Specifications may vary without notice as part of our continuous improvement practices.
- Clean with a damp cloth. Do not use abrasive cleaners, liquids or pastes.