



Arqstone – Crafted from natural stone – Strong and durable

Arqstone sinks, made in Europe from natural stone, are extremely tough and resistant to high temperatures, scratching and stains. The high density stone surface is easy to clean and the smooth finish ensures a high level of hygiene.

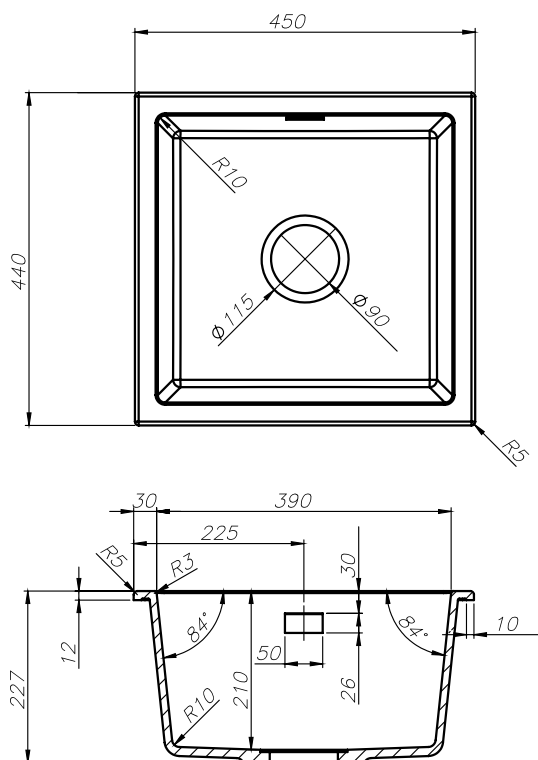
- Smooth silk matte finish, crafted from pure natural quartz aggregate and resins
- Suits undermount or abovement installation
- Exceptionally strong and durable
- Deep, large capacity bowl, easy to clean corners, 10mm radii
- Stainless steel basket waste

Order codes

192183	Oros 450 – White
192182	Oros 450 – Black

Product details

SUMMARY	Single bowl sink with integrated overflow
COLOURS	Available in Arqstone White and Black
OVERFLOW	Integrated overflow
WASTE	90 mm stainless steel basket waste
SIZE	Overall 450 x 440 mm, 210 mm deep, rim 30 mm



Optional extras



Colour wastes and overflow plates

- Black
- White
- Gunmetal
- Brushed Gold
- Brushed Nickel (supplied)

Sinks are supplied with a Stainless Steel/Brushed Nickel waste and overflow plate as standard. Colour wastes/overflow plates are optional extras.

Sink accessories

Available for most sinks



 Sink has integrated overflow

SEIMA

kitchen + laundry + bathroom ware

seima.com.au

Please note

- All measurements are in millimetres.
- Stone sinks: Dimensions are subject to normal manufacturing variations of ± 3 mm.
- Always use the actual product to verify cutout.
- Use silicone sealant. Do not use epoxy type adhesives.
- Specifications may vary without notice as part of our continuous improvement practices.

Scan for more about
Arqstone sinks

