

SEIMA

This kit SKU:

[code]
[colour]

Kit includes
Pop-out bath waste



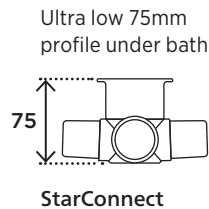
Various colours available



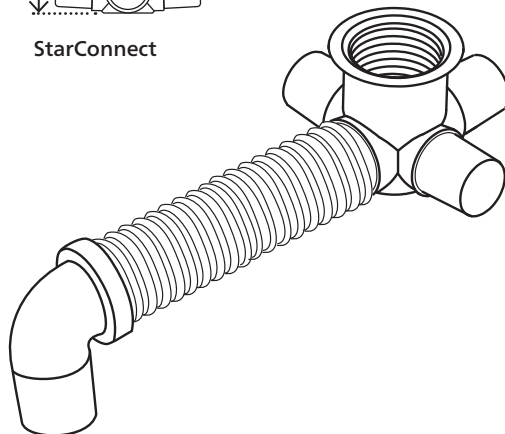
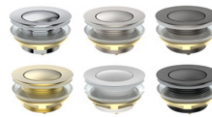
Flexi-Waste™ Bath Waste Pop-out Kit

ULTRA COMPACT bath waste solution with premium pop-out waste

Kit contents



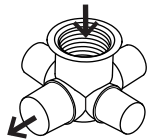
Pop-out bath waste
Colour options:



StarConnect
Bath waste connector

DN40 Flexible Waste Hose*
40mm diameter
300mm included

Floor Waste Elbow



StarConnect

WARNING Only the DN40 Spigot of StarConnect is used in this Kit. The three DN32 spigots are only needed with external overflow kits and should be left intact and unchanged. Do not knock out the DN32 spigot ends unless installing an overflow kit. (If using overflow kit, see other instructions.)

*Longer hose lengths available separately.



WaterMark

WMTS 040 LN 23422
ID: 191992, 191993

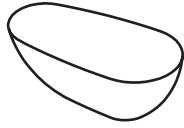


AUSTRALIAN MADE

Designed and made in Australia by Seima.
This Seima innovation is a patented, registered design.



Video instructions



Flexi-Waste™

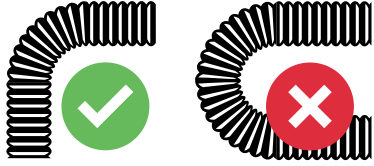
Bath Waste Pop-out Kit

Important

Read all instructions before starting installation.

The installation sequence shown here is a recommendation. The sequence can be changed to suit your circumstances.

Must be installed by a licensed plumber in accordance with Australian Standard AS3500.



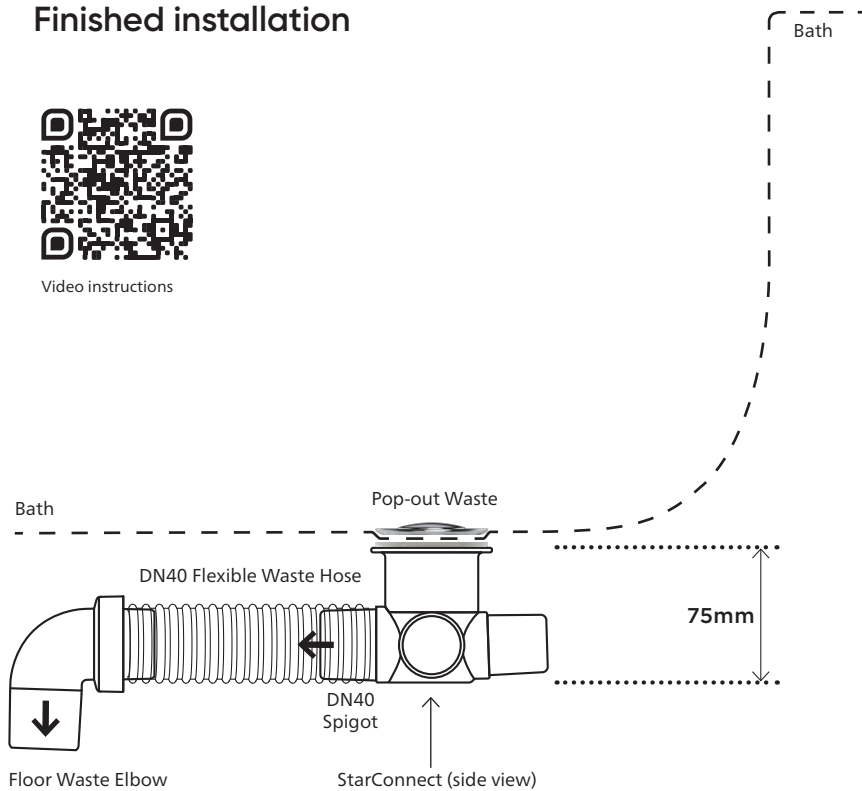
IMPORTANT

- Do not overstretch flexible hose.
- Do not form angles in the hose of less than 90 degrees.

Finished installation



Video instructions

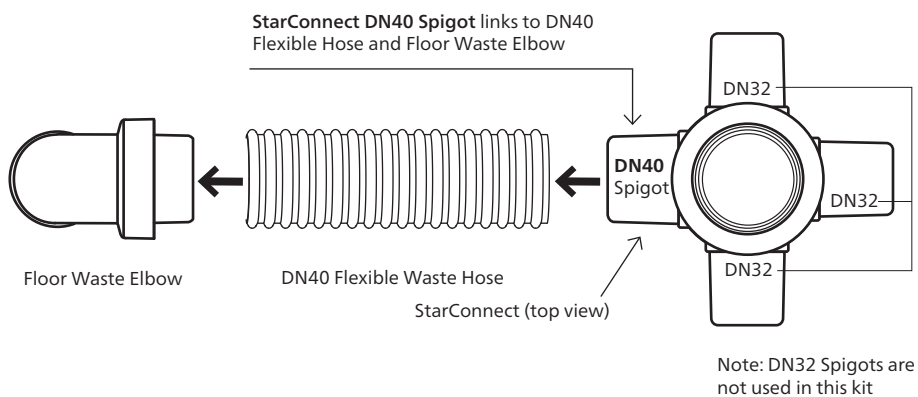


Instructions – Steps

- 1 Orientate the StarConnect DN40 Spigot to face towards the location of the floor waste. Note details of this positioning.
 - 2 Take the Plug+Waste and unscrew the brass washer from the base (discard washer, not required). Now remove the large clear rubber seal from the base. Apply silicone as indicated to ensure a watertight seal between the bath, waste and StarConnect.
 - 3 Measure and cut the appropriate length of DN40 Flexible Waste Hose to link the DN40 Spigot of the StarConnect to reach the floor waste location and Floor Waste Elbow.
 - 4 Solvent weld the DN40 Flexible Waste Hose to link the DN40 Spigot and Floor Waste Elbow.
 - 5 Install the Floor Waste Elbow to the floor waste in accordance with AS3500.
 - 6 Leak test the whole system as per AS3500 before enclosing.
-

STEP 1

Orientate StarConnect DN40 Spigot towards floor waste



WARNING Only the DN40 Spigot is used in this Kit. The three DN32 spigots are only needed with external overflow kits and should be left intact and unchanged. Do not knock out the DN32 spigot ends unless installing an overflow kit.

STEP 2

Sealing the Pop-out Waste

